

Database Server Installation

1. Purpose

Purpose of this procedure is to describe the instructions to successfully install the *DBISAM Database Server* used for the Client/ Server Module. Updating of the *Database Server* is also described.

2. Instruction

Instructions described in this document are applicable to installations of the Database Server as well as for updating of the Database Server.

Note: Installation and updating of the database servers have to be done from the Fileserver.

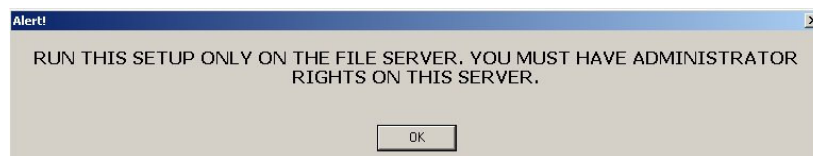
2.1 Installation of the DBISAM Database Server

- Start the program dbsetup*** from the fileserver by double-clicking on its icon. (*** stands for the version number)
- Then click on setup.



ref 1- start screen

- Here you will get the Alert screen that you should only install this from a fileserver. Click on ok.



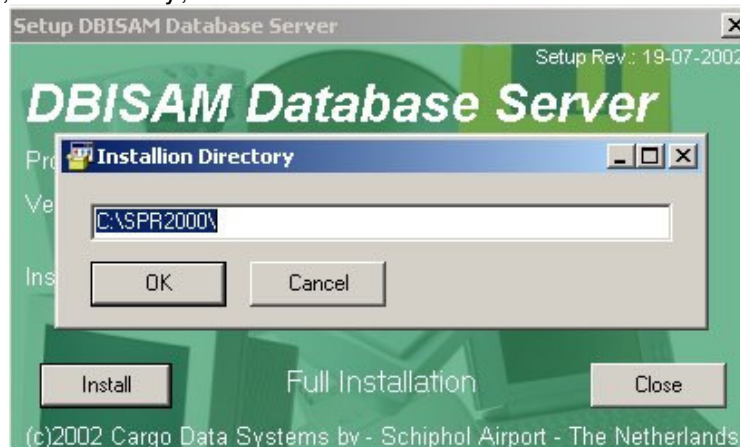
ref 2 - Alert

- Make sure that the installation directory shows a local drive (c of d).
- Next click on install



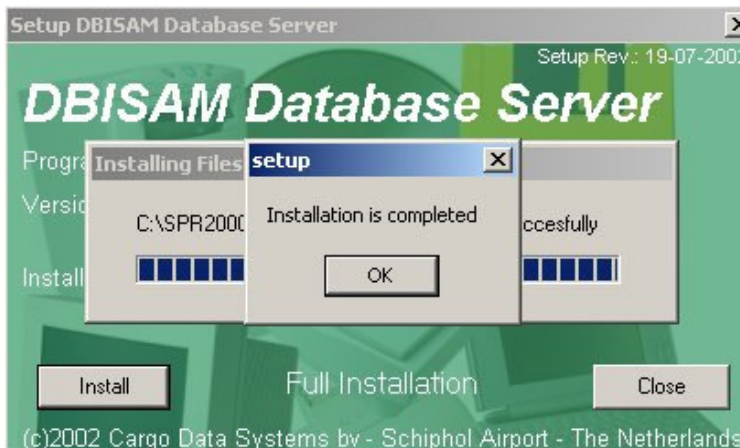
ref 3 – setup screen

- Change, if necessary, the location and click on OK.



ref 4 – installation directory

- The database server is being installed. When finished ref 5 appears. Click on OK.



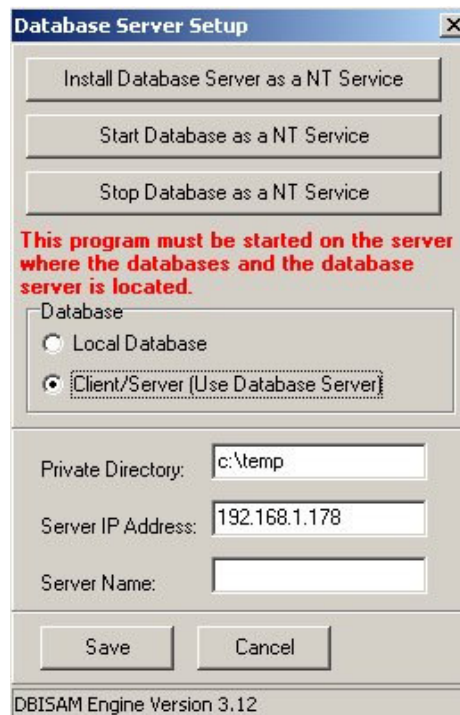
ref 5 - completed

- On the screen (see ref 3) click on close, after which the database server is being started.
- Check if the Database server has been started. This you can see by checking if the icon is shown in the right bottom of you screen (see ref 6)



ref 6 – icon

- Automatically the configuration screen for the database server setup is started (see ref 7). Click on *Client/Server (Use Database Server)*
- Fill in a location at *Private Directory* for example c:\temp. Make sure that the location exists on the server as well as on every workstation.
- Click on Save



ref 7 – database server setup

